



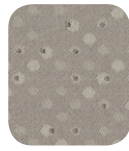
BENDAY | 15H X 12.25V | 100% POLYESTER | 30K DOUBLE RUBS



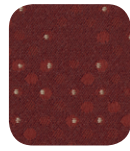
beachgrass



bluestone



chalk



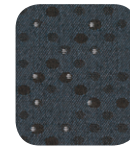
lipstick



newsprint



pewter



river



scampi



smoke



timber

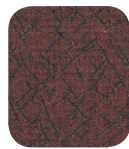
BUNNY HOP | 15H X 7.5V | 100% POLYESTER | 96K DOUBLE RUBS



bluejay



chrome



crabapple



cypress



evergreen



fern



gold



leather



teal

CASTILLO | NO REPEAT | 100% POLYURETHANE | PVC FREE | ANTIMICROBIAL & I-CLEAN | 200K DOUBLE RUBS



batik



black



breezy



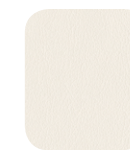
buff



butter cream



clementine



cream



honeydew



java



metal



pistachio



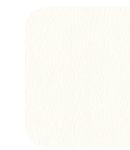
quarry



red



steel



white





CITY PARK | 7.25H X 6V | 100% POLYESTER | 50K DOUBLE RUBS



birch bark



blue moon



cork



domino



kiwi



marigold



steely gray



tomato



walnut

CRITIC'S CHOICE | 5H X 4.35V | 54% POLYESTER, 46% RECYCLED POLYESTER | 30K DOUBLE RUBS



cinder



cocoa



iron



lake



raspberry



silver



sprout



tabby cat



tussah

DILLON | NO REPEAT | 100% POLYURETHANE | PVC FREE | ANTIMICROBIAL | 100K DOUBLE RUBS



apple green



black



buff



cordovan



fiesta



java



lipstick



luggage



ocean



sage



snow



stratus



thunder



williamsburg





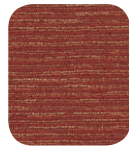
FANDANGO | 15H X 17V | 100% POLYESTER | 60K DOUBLE RUBS



admiral



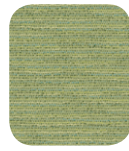
amber



apple



ash



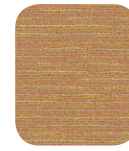
bluegrass



brass



cocoa



copper



ebony



russet

FINE TUNE | 7.5H X 6V | 100% POLYESTER | 40K DOUBLE RUBS



ash



cocoa



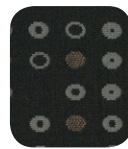
herb



indigo



luna



onyx



ruby



tangelo



wheat

HIGH COTTON TFL | NO REPEAT | 100% POLYESTER | TEFLON FINISH | 100K DOUBLE RUBS



brown sugar



coffee



cordovan



evergreen



haze



jade



khaki



peacock



steel





GREAT BEGINNINGS

LOOSE CHANGE | .38H X .88V | 100% POLYESTER | 70K DOUBLE RUBS



blue



brass



burgundy



gold



grey



prussian



sage

MONTGOMERY | NO REPEAT | 100% POLYESTER | 100K DOUBLE RUBS



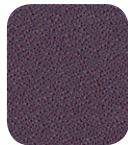
bermuda



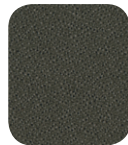
black



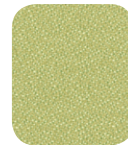
cocoa



grape



iron



lime



melon



midnight



mushroom



red pepper



sterling



taffy

PETAL PUSHER | 14.5H X 15V | 100% POLYESTER | 40K DOUBLE RUBS



cactus flower



cornflower



daffodil



daylily



dogwood



flora



ginkgo



iris



larkspur

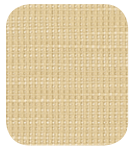


rose





RIDGECREST | NO REPEAT | 100% POLYESTER | 100K DOUBLE RUBS



beach



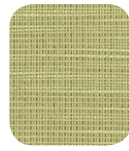
bittersweet



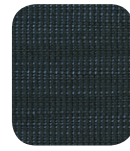
chocolate



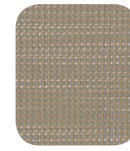
ink



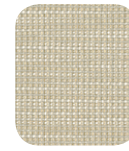
meadow



midnight



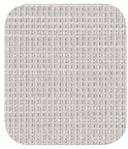
mink



putty



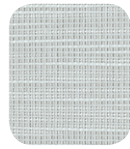
ruby



sterling



taupe



tidepool

TEA TIME | .5H X 1.25V | 100% POLYESTER | 30K DOUBLE RUBS



adobe



apple



ebony



ocean



olive

THUNDER STRIKE | .75H X .85V | 100% POLYESTER | 80K DOUBLE RUBS



birch



blue



bronze



cabernet



camel



graphite





VENUE TFL | NO REPEAT | 100% POLYESTER | TEFLON FINISH | 80K DOUBLE RUBS



cashmere



cerulean



clay



cocoa



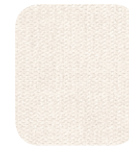
cornsilk



granite



harvest



hemp



mulberry



pompeii



truffle



waterlily

WINSLOW | 15H X 5V | 100% POLYESTER | 40K DOUBLE RUBS



belize



blaze



blue chip



blue smoke



cashew



deep red



fudge



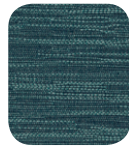
jet



mineral



moonbeam



peacock



putty

